

ARMY TM11-5895-833-34P-4  
NAVY NAVELEX 0967-LP-550-1100  
AIR FORCE TO 31R5-2MSC46-24

**DIRECT SUPPORT AND GENERAL SUPPORT MAINTENANCE  
REPAIR PARTS AND SPECIAL TOOLS LISTS  
(INCLUDING DEPOT MAINTENANCE REPAIR PARTS AND SPECIAL TOOLS)  
FOR  
AMPLIFIER, RADIO FREQUENCY AM-6631/MSC-46(V)  
(NSN 5820-00-155-8574)**

---

**DEPARTMENTS OF THE ARMY, THE NAVY, AND THE AIR FORCE  
SEPTEMBER 1977**

TECHNICAL MANUAL  
NO.11-5895-833-34P-4  
TECHNICAL MANUAL  
NAVELEX 0967-LP-550-1100  
TECHNICAL MANUAL  
TO 31RS-2MSC46-24

DEPARTMENT OF THE ARMY,  
THE NAVY, AND THE AIR FORCE

WASHINGTON, DC, 22 September 1977

**DIRECT SUPPORT AND GENERAL SUPPORT MAINTENANCE  
REPAIR PARTS AND SPECIAL TOOLS LISTS  
INCLUDING DEPOT MAINTENANCE REPAIR PARTS AND SPECIAL TOOLS  
FOR  
AMPLIFIER, RADIO FREQUENCY AM-6631/MSC-46(V)  
(NSN 5820-00-155-8574)**

*Current as of 15 April 1977*

**REPORTING OF ERRORS**

You can improve this manual by recommending improvements using DA Form 2028-2 (Test) located in the back of the manual. Simply tear out the self-addressed form, fill it out as shown on the sample, fold it where shown, and drop it in the mail.

If there are no blank DA Forms 2028-2 (Test) in the back of your manual, use the standard DA Form 2028 (Recommended Changes to Publications and Blank Forms) and forward to the Commander, US Army Electronics Command, ATTN: DRSEL-MA-Q, Fort Monmouth, New Jersey 07703.

For Air Force, use USAFLC Form 252 (Request for TO Revision or Change). Forward direct to prime ALC/MST.

For Navy, mail comments direct to: Commander, Naval Electronics Systems Command, Code 4903, Washington, DC 20360.

In either case, a reply will be furnished direct to you.

Table of Contents

		Page	Illus Figure
SECTION	I	1	
	II	2	
Group	0 7	5	1
	Amplifier, Radio Frequency AM-66212/MSC-4V)	5	1
	0710 ivider, power, radio frequency	6	1
	0712 Divider, power, radio frequency	5	1
	0714 Power supply	6	1
	0716 Circuit Card Assembly status indicator carbrator	6	1
	0718 Divider, power radio frequency	6	1
	0720 1-MHz amplifier power	6	1
	0722 5-MHz amplifier, power	6	1
Section	III		
	IV	9	
	Special tools list (Not applicable)		
	National stock number and part number index		

SECTION I. INTRODUCTION

1. Scope

lists repair parts required for performance of direct support and depot maintenance of the AM-6631/MSc-46(v).

2. General

This Repair Parts and Special Tools List is divided into the following sections:

a. *Section II. Repair Parts List.* A list of repair parts authorized for use in the performance of maintenance. The list also includes parts which must be removed for replacement of the authorized parts. Parts list are composed of functional groups in ascending numerical sequence, with the parts in each group listed in figure and item number sequence.

b. *Section III. Special Tools List.* Not applicable.

c. *Section IV. National Stock Number and Part Number Index.* A list, in ascending numerical sequence, of all National stock numbers appearing in the listings, followed by a list, in alphanumeric sequence, of all part numbers appearing in the listings. National stock numbers and part numbers are cross-referenced to each illustration figure and item number appearance.

3. Explanation of Columns

The following provides an explanation of columns found in the tabular listings:

a. *Illustration.* This column is divided as follows:

(1) *Figure number.* Indicates the figure number of the illustration in which the item is shown.

(2) *Item number.* The number used to identify each item called out in the illustration.

b. *Source, Maintenance, and Recoverability Codes (SMR).*

(1) *Source code.* Source codes are assigned to support items to indicate the manner of acquiring support items for maintenance, repair, or overhaul of end items. Source codes are entered in the first and second positions of the Uniform SMR Code format as follows:

Code	Definition
PA-	Item procured and stocked for anticipated or known usage.

**XB**—Item is not procured or stocked. If not available through salvage, requisition.

**NOTE**

Cannibalization or salvage may be used as a source of supply for any items source-coded above, except those coded XA, XD, and aircraft support items as restricted by AR

700-42.

(2) *Maintenance code.* Maintenance codes are assigned to indicate the levels of maintenance authorized to USE and REPAIR support items. The maintenance codes are entered in the third and fourth positions of the Uniform SMR Code format as follows:

(a) The maintenance code entered in the third position will indicate the lowest maintenance level authorized to remove, replace, and use the support item. The maintenance code entered in the third position will indicate one of the following levels of maintenance.

Code	Application/Explanation
0-	Support item is removed, replaced, used at the organizational level.
F-	Support item is removed, replaced, used at the direct support level.
D-	Support items that are removed, replaced, used at depot, mobile depot, specialized repair activity only.

(b) The maintenance code entered in the fourth position indicates whether the item is to be repaired and identifies the lowest maintenance level with the capability to perform complete repair (i.e., all authorized maintenance functions). This position will contain one of the following maintenance codes,

Code	Application/Explanation
D-	The lowest maintenance level capable of complete repair of the support item is the depot level, performed by depot.
Z-	Nonreparable. No repair authorized.

(3) *Recoverability code.* Recoverability codes are assigned to support items to indicate the disposition action on unserviceable items. The recoverability code is entered in the fifth position of the Uniform SMR code format as follows:

Recoverability codes	Definition
Z-	Nonreparable item. When unserviceable, condemn and dispose at the level indicated in position 3.
D-	Reparable item. When beyond lower level repair capability, return to depot. Condemnation and disposal not authorized below depot level.
L=-	Reparable item. Repair, condemnation, and disposal not authorized below depot/specialized repair activity level.

c. *National Stock Number.* Indicates the National stock number assigned to the item and will be used for requisitioning purposes.

d. *Part Number.* Indicates the primary number used

by the manufacturer (individual, company, firm, corporation or Government activity), which controls the design and characteristics of the item by means of its engineering drawings, specification standards, and inspection requirements, to identify an item or range of items.

#### NOTE

**when** a stock-numbered item is requisitioned, the repair part received may have a different part number than the part being replaced.

*e. Federal Supply Code for Manufacturer (FSCM)*

The FSCM is a 5-digit numeric code listed in SB 708-42 which is used to identify the manufacturer, distributor, or Government agency, etc.

*f. Description.* Indicates the Federal item name and, if required, a minimum description to identify the item.

*g. Unit of Measure.* Indicates the standards of the basic quantity of the listed item as used in performing the actual maintenance function. This measure is expressed by a two-character alphabetical abbreviation (e.g., ea, in, pr, etc.). When the unit of measure differs from the unit of issue, the lowest unit of issue that will satisfy the required units of measure will be requisitioned.

*h. Quantity Incorporated in Unit.* Indicates the quantity of the item used in the breakout shown on the illustration figure, which is prepared for a functional group, subfunctional group, or an assembly.

#### 4. Special information

*a.* The following publications pertain to the AM-6631/MS-46(V) and its components:

TM 11-5895-833-20P Frequency Conversion Subsystem

TM 11-5895-833-34P-1 Frequency Conversion Subsystem

*b.* National stock numbers (NSN's) that are missing

from P source-coded items have been applied for and will be added to this TM by future change/revision when they are entered in the Army Master Data File (AMDF). Until the NSN's are established and published, submit exception requisitions to; Commander, US Army Electronics Command, ATTN: DRSEL-MM, Fort Monmouth, New Jersey 07703 for the part required to support your equipment.

#### 5. How to Locate Repair Parts

*a.* When National stock number or part number is unknown:

(1) *First.* Using the table of contents, determine the functional group within which the repair part belongs. This is necessary since illustrations are prepared for functional groups and listings are divided into the same groups.

(2) *Second.* Find the illustration covering the functional group to which the repair part belongs.

(3) *Third.* Identify the repair part on the illustration and note the illustration figure and item number of the repair part.

(4) *Fourth.* Using the Repair Parts Listing, find the figure and item number noted on the illustration.

*b.* When National stock number or part number is known:

(1) *First.* Using the Index of National Stock Numbers and Part Numbers, find the pertinent National stock number or part number. This index is in ascending NSN sequence, followed by a list of part numbers in ascending alphanumeric sequence, cross-referenced to the illustration figure number and item number.

(2) *Second.* After finding the figure and item number, locate the figure and item number in the repairable parts list.

#### 6. Abbreviations

(Not applicable)

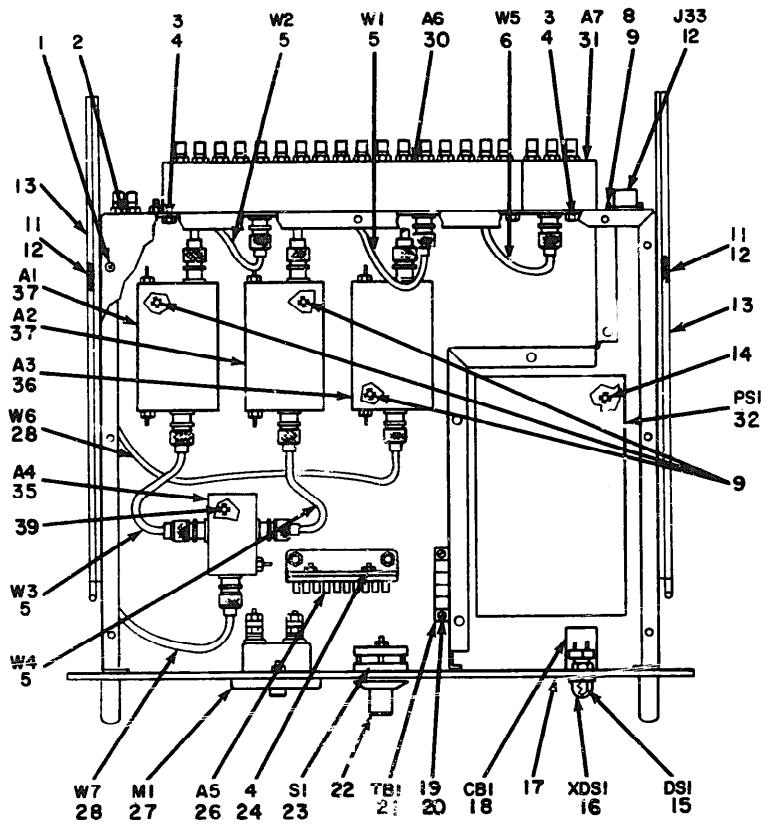
(Next printed page is 5)

## SECTION II. REPAIR PARTS LIST

(1) ILLUSTRATION		(2) SMR CODE	(3) NATIONAL STOCK NUMBER	(4) PART NUMBER	(5) FSCM	(6) DESCRIPTION	(7) UNIT OF MEAS	(8) QTY INC IN UNIT
(A) FIG NO.	(B) ITEM NC.					USABLE ON CODE		
						GROUP: 07 AMPLIFIER, RADIO FREQUENCY AM-6631/MSC-46(V)		
1	1	PAFZZ	5305-00-639-4777	MS35233-27	96906	SCREW, MACHINE	EA	14
1	2	XBDZZ		SK000113	34874	COVER, TOP	EA	1
1	3	XBFZZ	5310-00-934-9759	MS35649-284	96906	NUT, PLAIN, HEXAGON	EA	5
1	4	PAFZZ	5310-00-633-8119	MS35338-137	96906	WASHER, LOCK	EA	7
1	5	PAFZZ		SK0000W1	34874	CABLE ASSEMBLY, RADIO FREQUENCY	EA	4
1	6	PAFZZ	5995-01-071-9292	SK0000W2	34874	CABLE ASSEMBLY, RADIO FREQUENCY	EA	1
1	7	PAFZZ	5310-00-934-9748	MS35649-244	96906	NUT, PLAIN, HEXAGON	EA	4
1	8	PAFZZ	5310-00-933-8118	MS35338-135	96906	WASHER, LOCK	EA	4
1	9	PAFZZ	5305-00-022-7056	MS35249-21	96906	SCREW, MACHINE	EA	16
1	10	PAFZZ	5935-00-879-1813	MS3116E12-3P	96906	CONNECTOR, RECEPTACLE, ELECTRICAL	EA	1
1	11	XBFZZ		MS35233-63	96906	SCREW, MACHINE	EA	12
1	12	PAFZZ	5310-00-933-8120	MS35338-138	96906	WASHER, LOCK	EA	12
1	13	PAFZZ		110QDP18B	05236	SLIDE, DRAWER, EXTENSION	EA	2
1	14	PAFZZ	5305-00-022-7138	MS35249-52	96906	SCREW, MACHINE	EA	6
1	15	PAZZZ	6240-00-155-7826	MS25237-327	96906	LAMP, INCANDESCENT	EA	1
1	16	PAFZZ	6210-00-892-4468	812-1030-0975-50	72619	LAMPHOLDER	EA	1
1	17	XBFZZ		SMB75369C-1	80063	SHIELD, CIRCUIT BREAKER	EA	1
1	18	PAFZZ		M39019-1-37	81541	CIRCUIT BREAKER	EA	1
1	19	PAFZZ	5305-00-543-2774	MS35233-32	96906	SCREW, MACHINE	EA	2
1	20	PAFZZ	5310-00-929-6395	MS35338-136	96906	WASHER, LOCK	EA	2
1	21	XBFZZ	5940-00-235-8580	4-140Y	71785	TERMINAL BOARD	EA	1
1	22	PAZZZ	5355-01-005-6667	7C3-2G	94144	KNOB	EA	1
1	23	PADZZ	5930-01-006-7824	399563HC	76854	SWITCH, ROTARY	EA	1
1	24	XBDZZ	5305-01-012-8366	MS35233-42	96906	SCREW, MACHINE	EA	2
1	25	PAFZZ	5310-00-880-5978	MS15795-807	96906	WASHER, FLAT	EA	2
1	26	PAFDD		SMC754244	80063	CIRCUIT CARD ASSEMBLY, STATUS INDICATOR CALIBRATOR	EA	1
1	27	PAFZZ		621-16815	77221	AMMETER	EA	1
1	28	PAFZZ	5995-01-017-9293	SK0000W3	34874	CABLE ASSEMBLY, RADIO FREQUENCY	EA	2
1	29	PAFZZ	5305-00-22-7053	MS35249-20	96906	SCREW, MACHINE	EA	4
1	30	PAFDL		SK000103	34874	GROUP: 0710 DIVIDER, POWER, RADIO FREQUENCY DIVIDER, POWER, RADIO FREQUENCY	EA	1
1	31	PAFDL		SK000105	34874	GROUP: 0712 DIVIDER, POWER, RADIO FREQUENCY DIVIDER, POWER, RADIO FREQUENCY	EA	1
1	32	PAFDL		SK000108	34874	GROUP: 0714 POWER SUPPLY POWER SUPPLY	EA	1

SECTION II. REPAIR PARTS LIST (CONTINUED)

(1) ILLUSTRATION		(2) SMR CODE	(3) NATIONAL STOCK NUMBER	(4) PART NUMBER	(5) FSCM	(6) DESCRIPTION  USABLE ON CODE	(7) UNIT OF MEAS	(8) QTY INC IN UNIT
(A) FIG NO.	(B) ITEM NO.							
						GROUP: 0716 CIRCUIT CARD ASSEMBLY STATUS INDICATOR CALIBRATOR		
1	33	PADZZ		RJ12CY103	81349	RESISTOR, VARIABLE	EA	10
1	34	XBDZZ	5905-00-483-4284	SMD754245	80063	TERMINAL BOARD	EA	1
						GROUP: 0718 DIVIDER, POWER, RADIO FREQUENCY		
1	35	PAFDD		SK000106	34874	DIVIDER, POWER, RADIO FREQUENCY	EA	1
						GROUP: J720 1-MHz AMPLIFIER, POWER		
1	36	PAFDL		SK000104	34874	1-MHz AMPLIFIER, POWER	EA	1
						GROUP: 0722 5-MHz AMPLIFIER, POWER		
1	37	PAFDL		SK000102	34874	5-MHz AMPLIFIER, POWER	EA	2

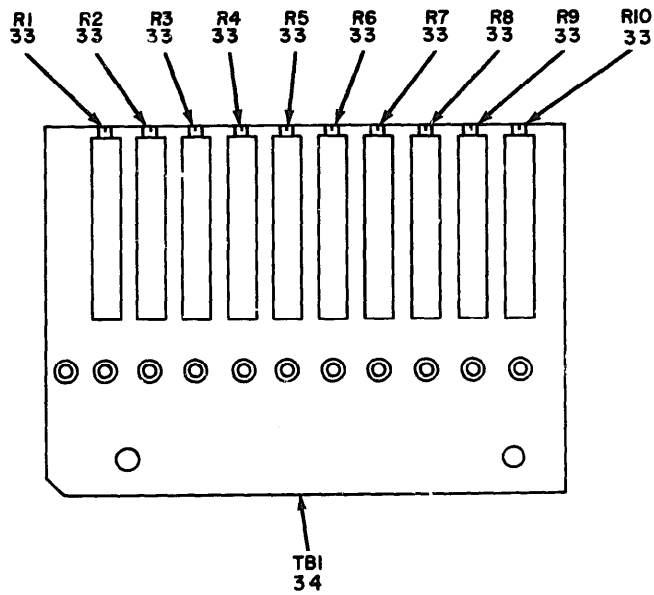


PREFIX REFERENCE  
 DESIGNATIONS WITH UNIT  
 NUMBER AND SUBASSEMBLY  
 DESIGNATION.

EL5895-833-34P-4-TM 1

Figure 1. Amplifier, Radio Frequency AM 663I/MSC-46(V). (sheet 1 of 2).

ARMY TM11-5895-833-34P-4  
AIR FORCE T.O. 31R5-2MSC46-24  
NAVY NAVELEX-0967-LP-550-1100



PREFIX ALL REFERENCE  
DESIGNATIONS WITH UNIT  
NUMBER AND SUBASSEMBLY  
DESIGNATION.

EL589S-833-34P-4-TM-2

Figure 1. Amplifier, Radio Frequency AM-663I/MS-46(V) (sheet 2 of 2),.



SECTION IV. NATIONAL STOCK NUMBER AND PART NUMBER INDEX

STOCK NUMBER	FIG. NO.	ITEM NO.	STOCK NUMBER	FIG.	ITEM
5305-00-022-7056	1	9			
5305-00-022-7138	1	14			
5305-00-543-2774	1	19			
5305-00-639-4777	1	1			
5305-00-022-7053	1	29			
5305-00-012-8366	1	24			
5310-00-860-5978	1	25			
5310-00-929-6395	1	20			
5310-00-933-8118	1	8			
5310-00-933-8119	1	4			
5310-00-933-8120	1	12			
5310-00-934-9748	1	7			
5310-00-934-9759	1	3			
5355-01-005-6661	1	22			
5905-00-483-4284	1	33			
5930-01-006-7824	1	23			
5935-00-879-1813	1	10			
5940-00-235-8580	1	21			
5995-01-017-9292	1	6			
5995-01-017-9293	1	28			
6210-00-892-4468	1	16			
6240-00-155-7836	1	15			

ARMY TM1-5895-833-34P-4  
 AIR FORCE T. O. 31R5-2MSC46-24  
 NAVY NAVELEX-0967-LP-550-1100

SECTION IV. NATIONAL STOCK NUMBER AND PART NUMBER INDEX

PART NUMBER	FSCM	FIG. NO.	ITEM NO.	PART NUMBER	FSCM	FIG. NO.	ITEM NO.
MS15795-807	96906	1	25				
MS25237-327	96906	1	15				
MS3116E12-3P	96906	1	10				
MS35233-27	96906	1	1				
MS35233-32	96906	1	19				
MS35233-42	96906	1	24				
MS35233-63	96906	1	11				
MS35249-20	96906	1	29				
MS35249-21	96906	1	9				
MS35249-52	96906	1	14				
MS35338-135	96906	1	8				
MS35338-136	96906	1	20				
MS35338-137	96906	1	4				
MS35338-138	96906	1	12				
MS35649-244	96906	1	7				
MS35649-284	96906	1	3				
MS39019-1-37	81541	1	18				
RJ12CY103	81349	1	33				
SK0000W	34874	1	5				
3K0000W2	34874	1	6				
SK0000W3	34874	1	28				
SK000102	34874	1	37				
SK000103	34874	1	30				
SK000104	34874	1	36				
SK000105	34874	1	31				
sK000106	34874	1	35				
SK000108	34874	1	32				
SK000113	34874	1	2				
SMB753690-1	80063	1	17				
SMC754244	80063	1	26				
SMD754245	80063	1	34				
7C3-2G	94144	1	22				
110QDP18B	05236	1	13				
4-140Y	71785	1	21				
399563HC	76854	1	23				
621-16815	77221	1	27				
812-1030-0975-50	72619	1	16				

RECOMMENDED CHANGES TO EQUIPMENT TECHNICAL MANUALS



**SOMETHING WRONG WITH THIS MANUAL?**

THEN... JOT DOWN THE DOPE ABOUT IT ON THIS FORM, TEAR IT OUT, FOLD IT AND DROP IT IN THE MAIL!

FROM: (YOUR UNIT'S COMPLETE ADDRESS)

Commander  
Stateside Army Depot  
ATTN: AMSTA-US  
Stateside, N.J. 07703

DATE 10 July 1975

PUBLICATION NUMBER

TM 11-5840-340-12

DATE

23 Jan 74

TITLE

Radar Set AN/SPS-76

BE EXACT... PIN-POINT WHERE IT IS

IN THIS SPACE TELL WHAT IS WRONG AND WHAT SHOULD BE DONE ABOUT IT:

PAGE NO.	PARA-GRAPH	FIGURE NO.	TABLE NO.
----------	------------	------------	-----------

2-25	2-28		
3-10	3-3		3-1
5-6	5-8		

F03

Recommend that the installation antenna alignment procedure be changed through to specify a 2° IFF antenna lag rather than 1°.

REASON: Experience has shown that with only a 1° lag, the antenna servo system is too sensitive to wind gusting in excess of 20 knots, and has a tendency to rapidly accelerate and decelerate as it hunts, causing strain to the drive train. Hunting is minimized by adjusting the lag to 2° without degradation of operation.

Item 5, Function column. Change "2 db" to "3db."

REASON: The adjustment procedure for the TRANS POWER FAULT indicator calls for a 3 db (500 watts) adjustment to light the TRANS POWER FAULT indicator.

Add new step f.1 to read, "Replace cover plate removed in step e.1, above."

REASON: To replace the cover plate.

Zone C 3. On J1-2, change "+24 VDC to "+5 VDC."

REASON: This is the output line of the 5 VDC power supply. + 24 VDC is the input voltage.

TYPED NAME, GRADE OR TITLE, AND TELEPHONE NUMBER

SSG I. M. DeSpirito 999-1776

SIGN HERE:

*SSG I. M. DeSpirito*

DA FORM 1 AUG 74 2028-2 (TEST)

P.S.--IF YOUR OUTFIT WANTS TO KNOW ABOUT YOUR MANUAL "FIND," MAKE A CARBON COPY OF THIS AND GIVE IT TO YOUR HEADQUARTERS.

HISA 1686-75

TEAR ALONG DOTTED LINE



FILL IN YOUR  
UNIT'S ADDRESS

FOLD BACK

DEPARTMENT OF THE ARMY

OFFICIAL BUSINESS

PENALTY FOR PRIVATE USE, \$300

POSTAGE AND FEES PAID  
DEPARTMENT OF THE ARMY  
DOD-314



Commander  
US Army Electronics Command  
ATTN: DRSEL-MA-Q  
Fort Monmouth, New Jersey 07703

FOLD BACK

REVERSE OF DA FORM 2026-2 (TEST)



FILL IN YOUR  
UNIT'S ADDRESS

FOLD BACK

DEPARTMENT OF THE ARMY

POSTAGE AND FEES PAID  
DEPARTMENT OF THE ARMY  
DDO-314



OFFICIAL BUSINESS

PENALTY FOR PRIVATE USE, \$300

Commander  
US Army Electronics Command  
ATTN: DRSEL-MA-Q  
Fort Monmouth, New Jersey 07703

TEAR ALONG DOTTED LINE

FOLD BACK

REVERSE OF DA FORM 2028-2 (TEST)

RECOMMENDED CHANGES TO EQUIPMENT TECHNICAL MANUALS



**SOMETHING WRONG WITH THIS MANUAL?**

THEN... JOI DOWN THE DOPE ABOUT IT ON THIS FORM, TEAR IT OUT, FOLD IT AND DROP IT IN THE MAIL!

FROM: (YOUR UNIT'S COMPLETE ADDRESS)

DATE

PUBLICATION NUMBER

DATE

TITLE

BE EXACT... PIN-POINT WHERE IT IS

IN THIS SPACE TELL WHAT IS WRONG AND WHAT SHOULD BE DONE ABOUT IT:

PAGE NO.

PARA-GRAPH

FIGURE NO.

TABLE NO.

TEAR ALONG DOTTED LINE

TYPED NAME, GRADE OR TITLE, AND TELEPHONE NUMBER

SIGN HERE:

DA FORM 1 AUG 74 2028-2 (TEST)

P.S.--IF YOUR OUTFIT WANTS TO KNOW ABOUT YOUR MANUAL "FIND," MAKE A CARBON COPY OF THIS AND GIVE IT TO YOUR HEADQUARTERS.



FILL IN YOUR  
UNIT'S ADDRESS

FOLD BACK

DEPARTMENT OF THE ARMY

OFFICIAL BUSINESS  
PENALTY FOR PRIVATE USE, \$300

POSTAGE AND FEES PAID  
DEPARTMENT OF THE ARMY  
DOD-314



Commander  
US Army Electronics Command  
ATTN: DRSEL-MA-Q  
Fort Monmouth, New Jersey 07703

TEAR ALONG DOTTED LINE

FOLD BACK

REVERSE OF DA FORM 2025-2 (TEST)

Order of the Secretaries of the Army, the Navy, and the Air Force:

**BERNARD W. ROGERS**  
*General, United States Army*  
*Chief of Staff*

Official:

**J. C. PENNINGTON**  
*Brigadier General, United States Army*  
*The Adjutant General*

**EARL B. FOWLER**  
*Rear Admiral, United States Navy*  
*Commander, Naval Electronic*  
*Systems Command*

**DAVID C. JONES, General USAF**  
*Chief of Staff*

Official:

**M. M. ROGERS, General, USAF**  
*Commander, Air Force Logistics*  
*Command*

Distribution:

*Active Army:*

USASA (2)  
COE (1)  
TSG (1)  
USAARENB (1)  
DARCOM (1)  
TECOM (2)  
USACC (4)  
TRADOC (2)  
OS Maj Comd (4)  
MDW (1)  
Armies (2)  
Corps (2)  
HISA (Ft Monmouth) (33)  
Ft Richardson (ECOM Ofc) (2)  
Instl (2) except  
Ft Gillem (10)  
Ft Gordon (10)  
Ft Huachuca (10)  
Ft Carson (5)  
SAAD (30)  
LBAD (14)  
TOAD (14)  
SHAD (3)

Svc Colleges (1)  
USAICS (3)  
USAADS (2)  
USAFAS (2)  
USDAARMS (2)  
USAIS (2)  
USAES (2)  
MAAG (1)  
USARMIS (1)  
USAERDAA (1)  
USABRDAW (1)  
Sig FLDMS (1)

ARNG & USAR: None

For explanation of abbreviations used, see AR310-50.

**DEPARTMENT OF THE ARMY  
US ARMY AG PUBLICATIONS CENTER  
1435 WOODSON ROAD  
ST. LOUIS, MISSOURI 63114**  
**OFFICIAL BUSINESS  
PENALTY FOR PRIVATE USE \$300**

**POSTAGE AND FEES PAID  
DEPARTMENT OF THE ARMY  
DOD 314**



**END**

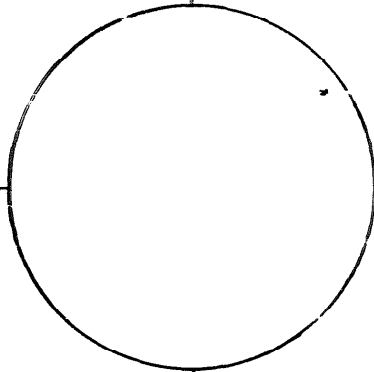
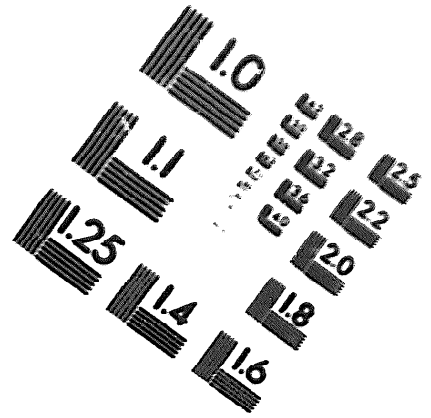
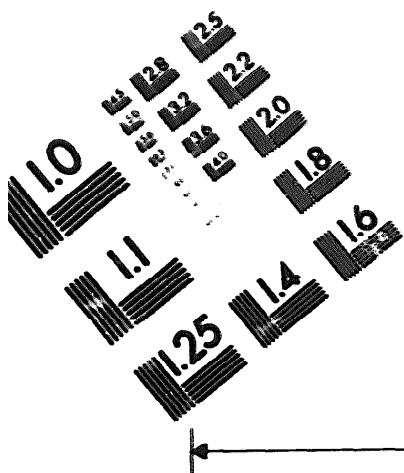
03-04-83

**DATE**





DEPARTMENT OF THE ARMY  
MICROFORM  
TEST TARGET



150 MM

1.0 mm (e= 0.31 mm)

ABCDEFGHIJKLMN OPQRSTUVWXYZ 1234567890  
abcdefghijklmnopqrstuvwxyz \$%&' /%# 1/2 1/4 3/4 —+ x&@\*

1.5 mm (e= 1.09 mm)

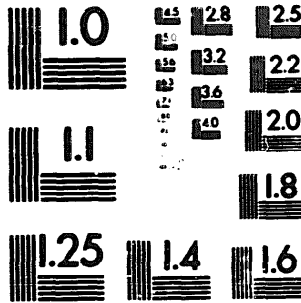
ABCDEFGHIJKLMN OPQRSTUVWXYZ 1234567890  
abcdefghijklmnopqrstuvwxyz \$%&' /%# 1/2 1/4 3/4 —+ x&@\*

2.0 mm (e= 1.37 mm)

ABCDEFGHIJKLMN OPQRSTUVWXYZ  
abcdefghijklmnopqrstuvwxyz  
1234567890 \$%&' /%# 1/2 1/4 3/4 —+ x&@\*

2.5 mm (e= 1.77 mm)

ABCDEFGHIJKLMN OPQRSTUVWXYZ  
abcdefghijklmnopqrstuvwxyz  
1234567890 \$%&' /%# 1/2 1/4 3/4 —+ x&@\*



1.0 mm (e= 0.31 mm)

ABCDEFGHIJKLMN OPQRSTUVWXYZ 1234567890  
abcdefghijklmnopqrstuvwxyz \$%&' /%# 1/2 1/4 3/4 —+ x&@\*

1.5 mm (e= 1.09 mm)

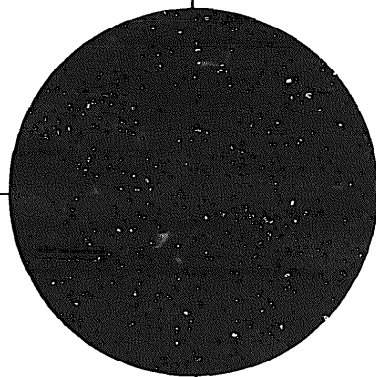
ABCDEFGHIJKLMN OPQRSTUVWXYZ 1234567890  
abcdefghijklmnopqrstuvwxyz \$%&' /%# 1/2 1/4 3/4 —+ x&@\*

2.0 mm (e= 1.37 mm)

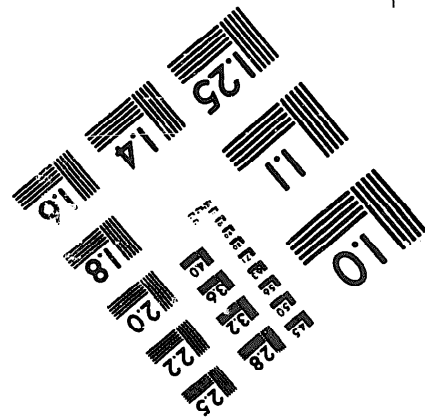
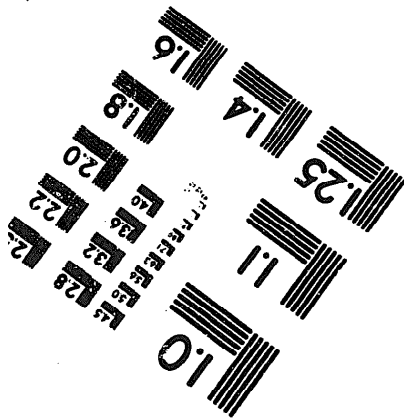
ABCDEFGHIJKLMN OPQRSTUVWXYZ  
abcdefghijklmnopqrstuvwxyz  
1234567890 \$%&' /%# 1/2 1/4 3/4 —+ x&@\*

2.5 mm (e= 1.77 mm)

ABCDEFGHIJKLMN OPQRSTUVWXYZ  
abcdefghijklmnopqrstuvwxyz  
1234567890 \$%&' /%# 1/2 1/4 3/4 —+ x&@\*



200 MM



250 MM